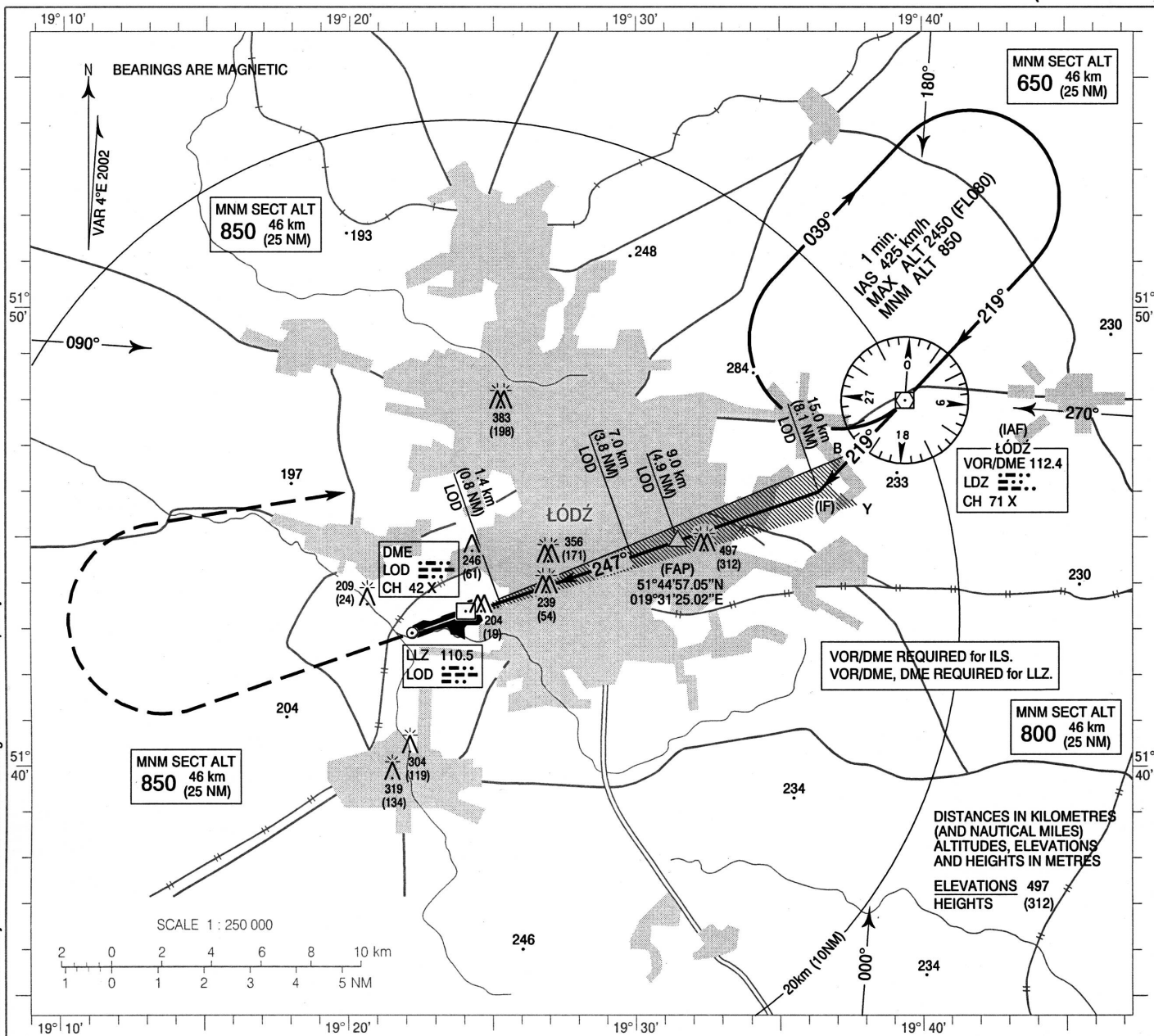


INSTRUMENT
APPROACH
CHART - ICAOAERODROME ELEV 185 m
HEIGHTS RELATED TO
THR RWY 25 - ELEV 185 m

TWR 124.225

ŁÓDŹ / Lublinek
ILS / DME or LLZ
RWY 25 (CAT A/B/C/D)

Correction: Runway extended. LLZ moved. Circling Cat. D. INFO frequency withdrawn.

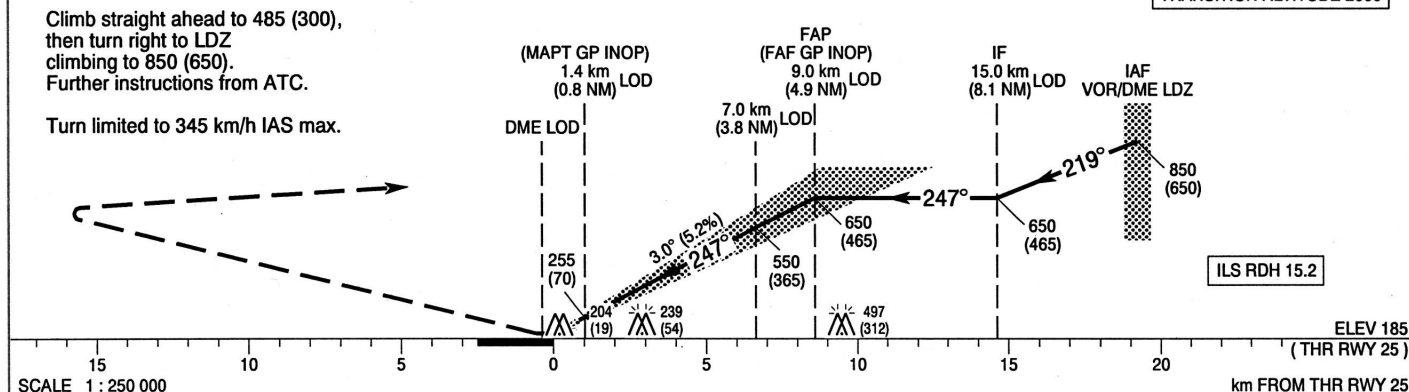


MISSED APPROACH

Climb straight ahead to 485 (300),
then turn right to LDZ
climbing to 850 (650).
Further instructions from ATC.

Turn limited to 345 km/h IAS max.

TRANSITION ALTITUDE 2000



OCA (OCH)					Distance FAF - MAPT 7.6 km (4.1 NM)									
Cat. of ACFT		A	B	C	D	Speed	km / h	100	125	150	200	250	300	350
Straight - in	Cat. I	244 (59)	247 (62)	250 (65)	253 (68)	Time	min : s	4 : 34	3 : 39	3 : 02	2 : 17	1 : 49	1 : 31	1 : 18
	GP INOP	315 (130)	315 (130)	315 (130)	315 (130)	Rate of descent	m / s	1.5	1.8	2.2	2.9	3.6	4.4	5.1
						Final approach distance/altitude (height)								
Circling		340 (155)	450 (265)	480 (295)	505 (320)	Distance	8 km (4.3 NM)		6 km (3.2 NM)		4 km (2.2 NM)		2 km (1.1 NM)	
						Altitude (height)	600 (415)		495 (310)		390 (205)		285 (100)	